

Announcement

8/29/07

1. Regarding your MyFAU account and access to the CSE student server.

- a) All FAU students have a MyFAU account individually. If you have not started using MyFAU account yet, please do it soon. If you don't know your MyFAU account name, please access the following URL to get one:

<http://myfau.fau.edu/cp/home/loginf>

- b) Next, to activate your active directory with IRM.

Your MyFAU account will qualify you for an active directory with IRM. However, you need to activate it yourself either by clicking on the “[Active Directory Account Activation](#)” button on the above-said Web page, or by accessing the following URL directly:

<https://secure.fau.edu/createusr/webform1.aspx>

- c) Once you have activated your active directory, you may access the CSE student server, pluto.cse.fau.edu, using the same login/password.
- d) More details about accessing pluto.cse.fau.edu can be obtained via the following link:

<http://www.cse.fau.edu/Resources/pluto.html>

2. CSE computing resources

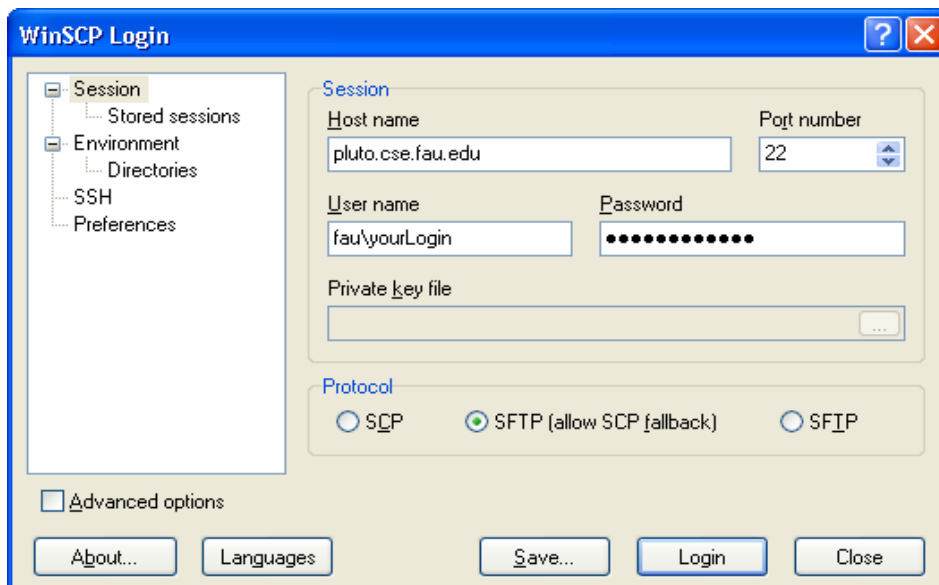
Relevant information about using the CSE computing resources can be obtained via:

<http://www.cse.fau.edu/computing.htm>

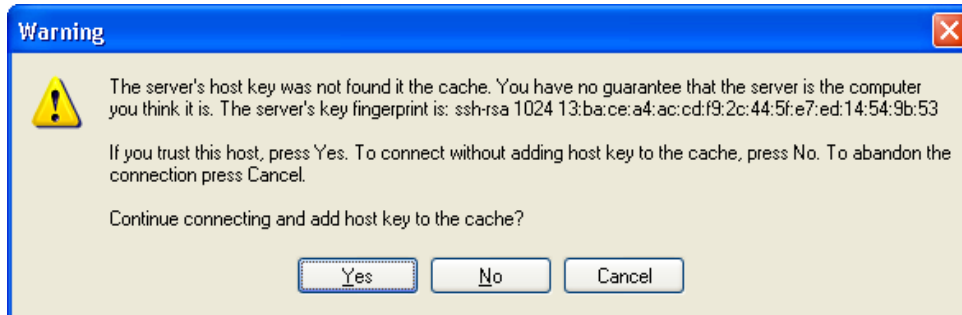
3. To download free WinSCP for safe file transfers between your home machine and the CSE student server.
 - a) WinSCP is a window-based safe file transfer software that includes SFTP (SSH File Transfer Protocol) and SCP (Secure CoPy) programs for Windows using SSH (Secure SHell). Its main function is the safe copying of files between two networked computers.
 - b) You may download WinSCP from the following URL:

<http://winscp.sourceforge.net/eng/download.php>
 - c) Select [Standalone application](#), or go to the following URL directly:

<http://prdownloads.sourceforge.net/winscp/winscp373.exe?download>
 - d) There are many download sites. Choose the one which is the closest geographically to where your machine is located.
 - e) Next is to invoke this software after a successful download. You may see a window similar to the following. Just key in your login ID and password.



- f) You will then be asked in the next window for your approval for the server key. Just click on **Yes**, since you don't have much choice. Note: You are asked only the first time you use it.



- g) After that you will see a window similar to the following. The column on the left shows files on your local machine and the column on the right shows you files on the remote machine. The remaining steps are for you to figure out.

